

REDISTRICTING SVMHD

Initial Mapping Scenarios

January, 2022

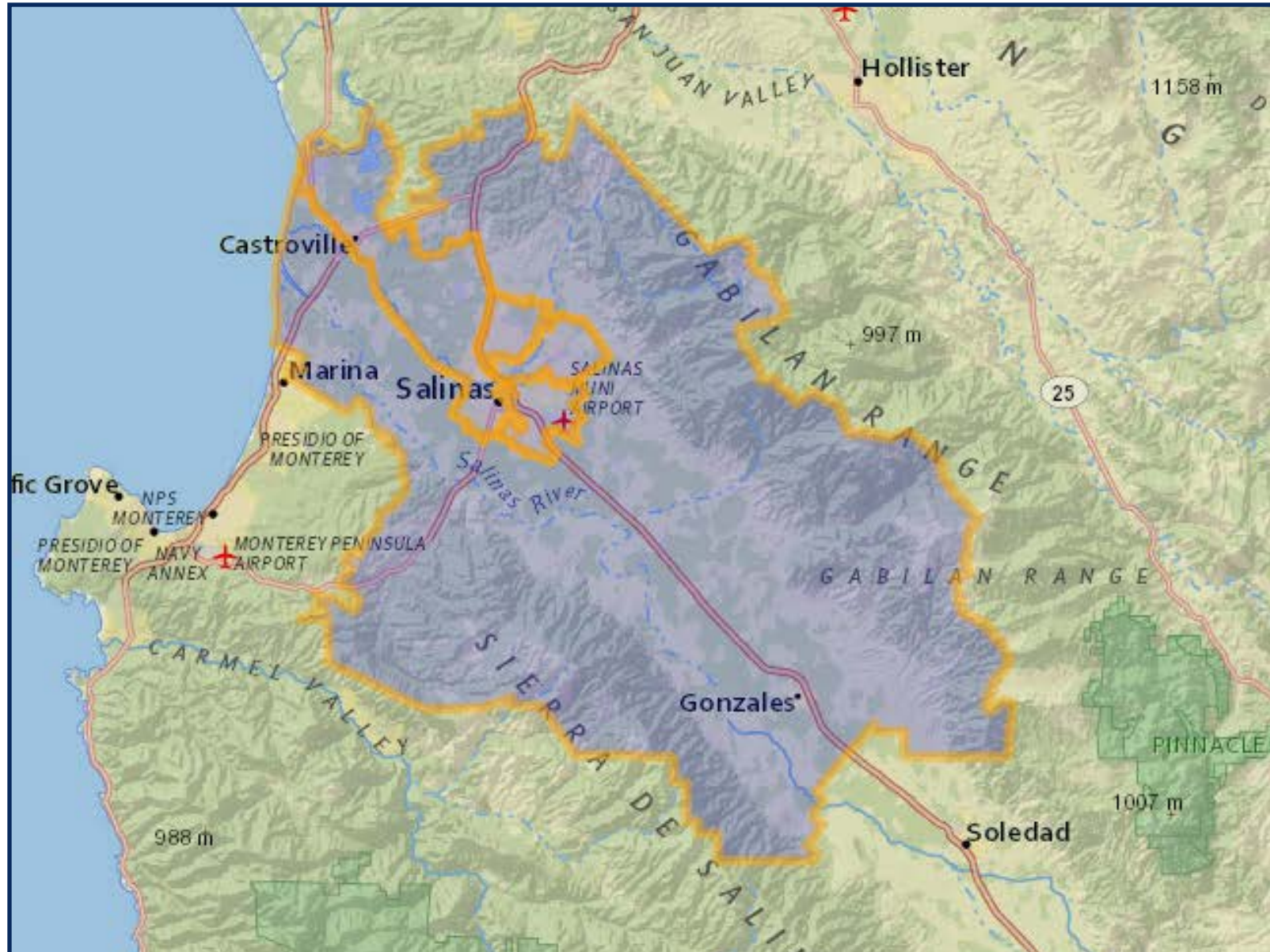
REDISTRICTING SVMHD SCENARIO I

	ZONE 1	ZONE 2	ZONE 3	ZONE 4	ZONE 5
2020 Census Count*	43,841	44,498	44,248	43,943	43,514
Deviation #	-168	489	239	-66	-495
Deviation %	-0.4%	1.1%	0.5%	-0.1%	-1.1%
2010 Census Count	41,833	40,085	41,551	40,501	38,717
2019 CVAP*	26,459	22,123	11,349	16,776	20,001
2010 CVAP	25,929	20,879	10,264	15,378	19,228



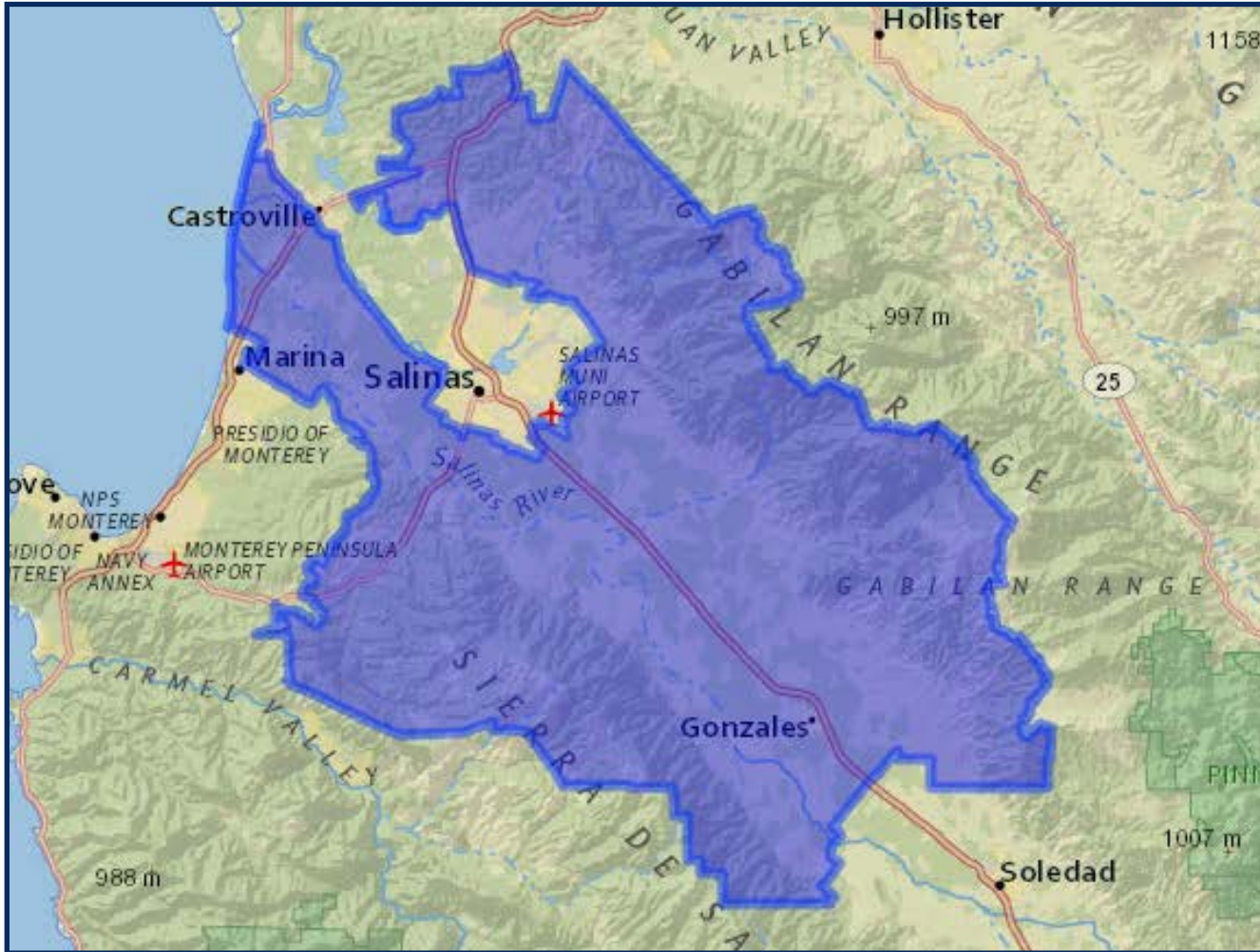
**Adjusted for prisoner reallocation*

REDISTRICTING SVMHD SCENARIO I



REDISTRICTING SVMHD SCENARIO I

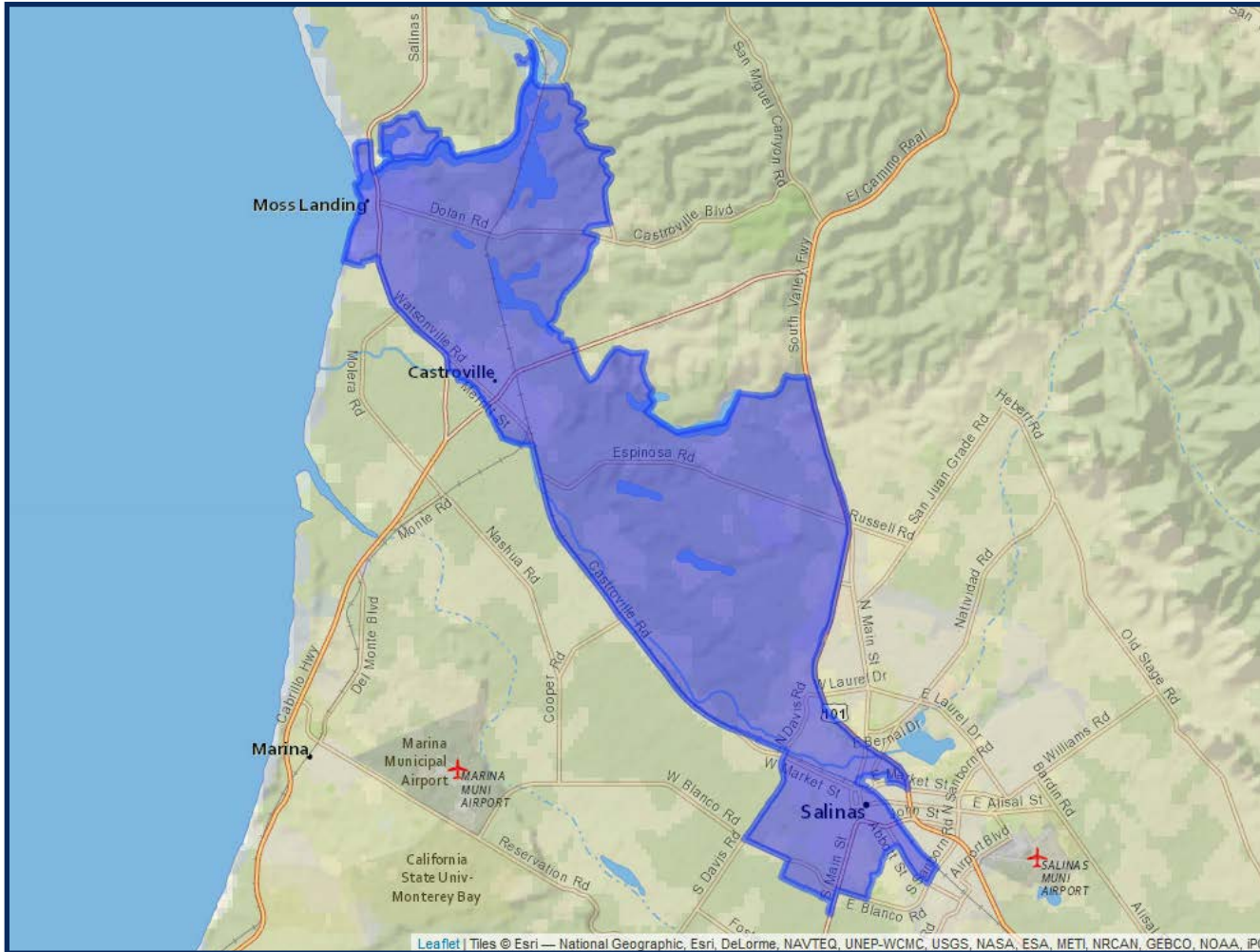
ZONE 1



	2020 Count*	2019 CVAP*
Total	43,841	26,459
White	38.27%	54.23%
Black	0.89%	0.96%
Asian	4.78%	4.38%
Hispanic	51.16%	35.91%

REDISTRICTING SVMHD SCENARIO I

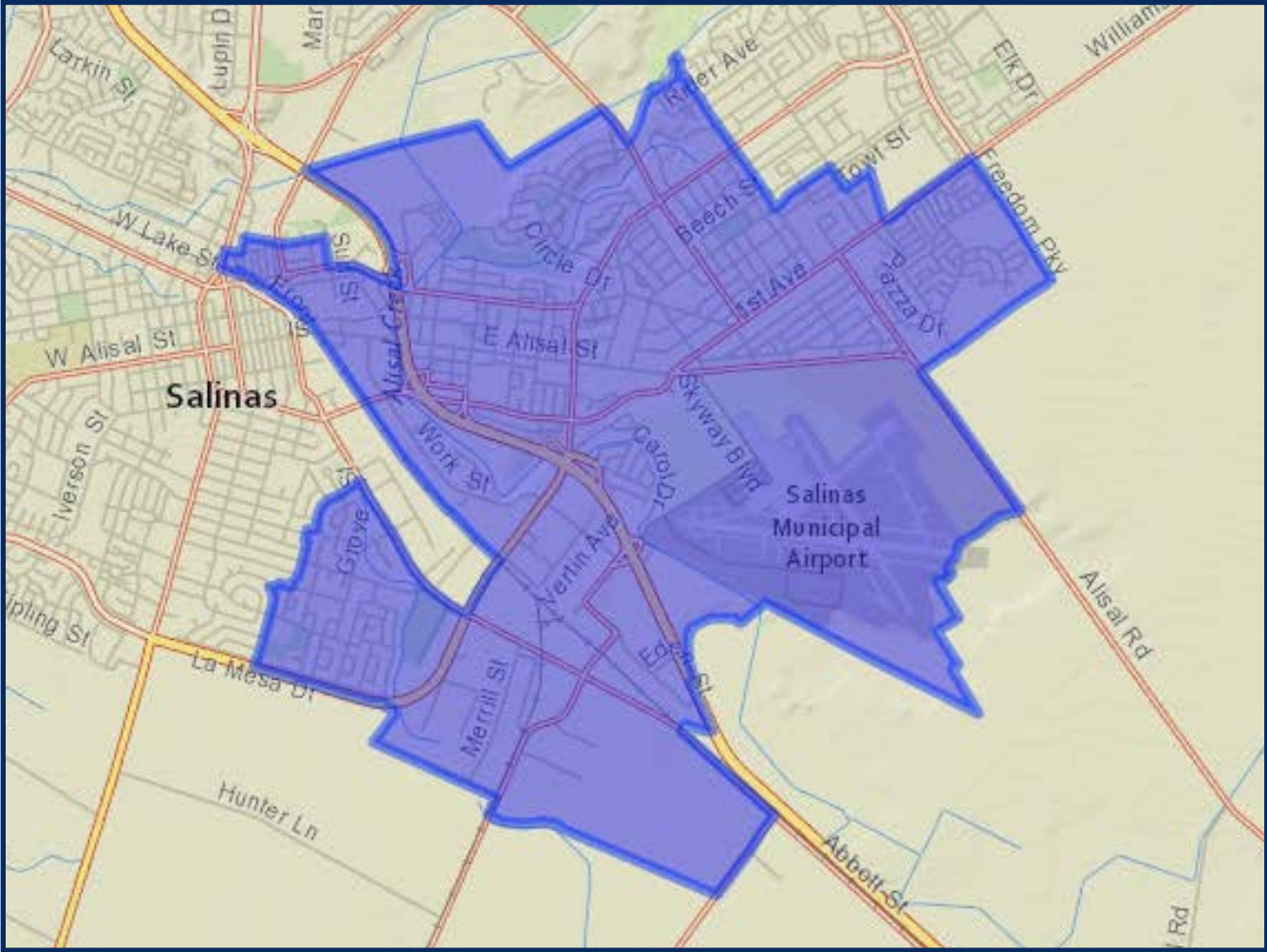
ZONE 2



	2020 Count*	2019 CVAP*
Total	44,498	22,123
White	21.08%	37.65%
Black	1.52%	2.12%
Asian	5.05%	7.14%
Hispanic	68.52%	51.15%

REDISTRICTING SVMHD SCENARIO I

ZONE 3

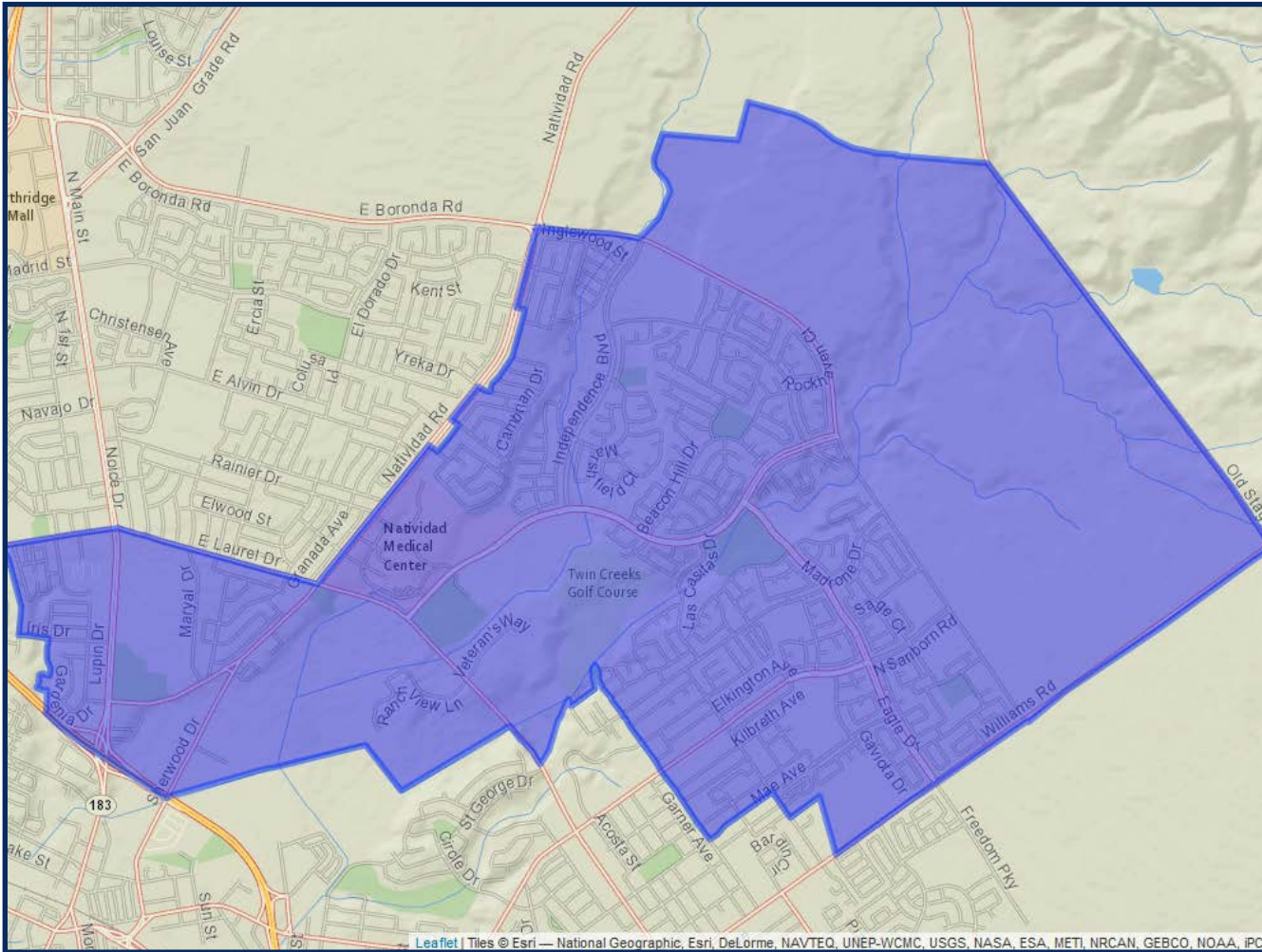


	2020 Count*	2019 CVAP*
Total	44,248	11,349
White	5.62%	17.71%
Black	0.58%	1.30%
Asian	2.43%	2.91%
Hispanic	89.92%	75.98%

*Adjusted for prisoner reallocation

REDISTRICTING SVMHD SCENARIO I

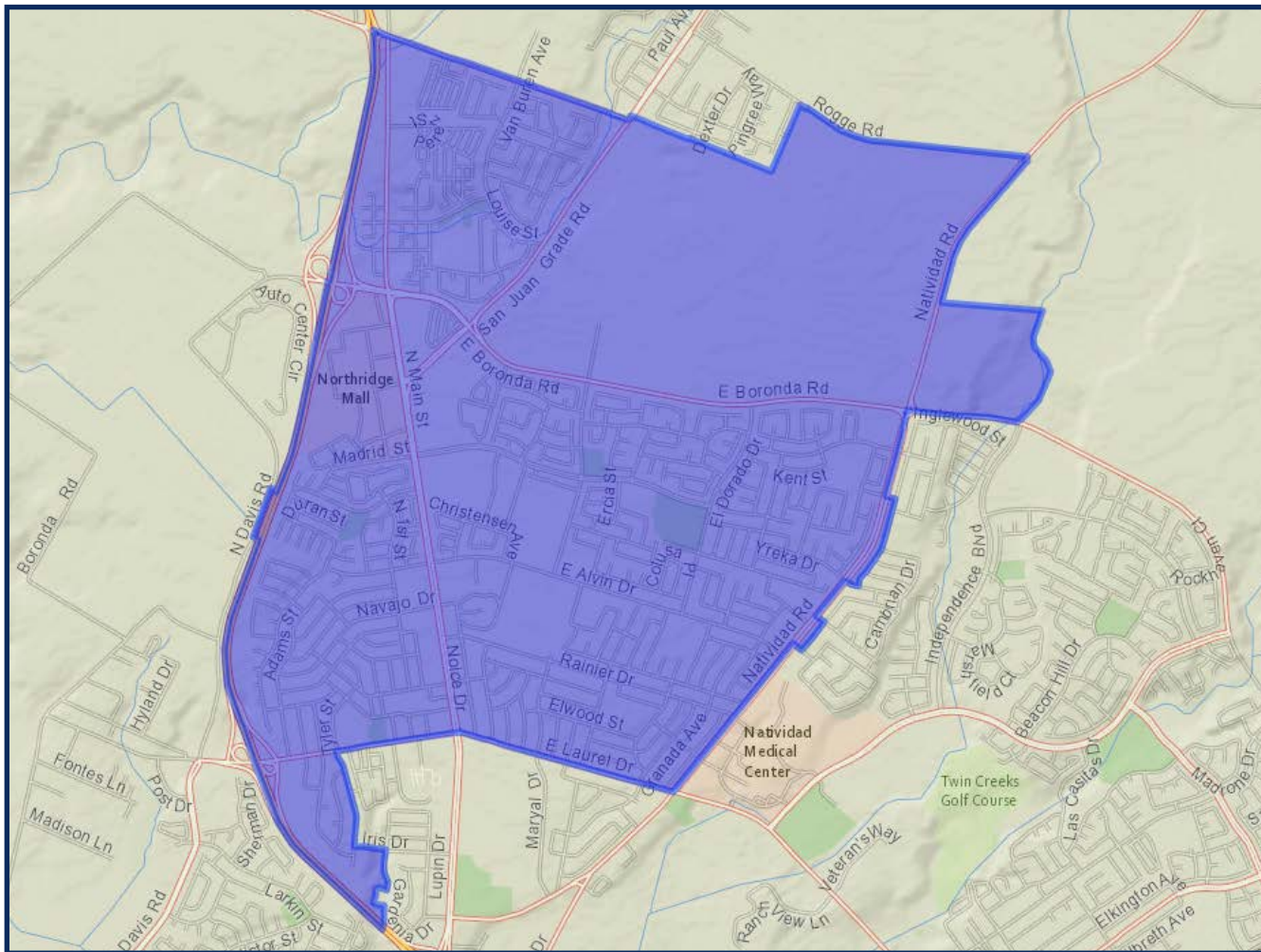
ZONE 4



	2020 Count*	2019 CVAP*
Total	43,943	16,776
White	7.31%	16.66%
Black	1.28%	3.83%
Asian	5.35%	7.00%
Hispanic	83.88%	69.71%

REDISTRICTING SVMHD SCENARIO I

ZONE 5



	2020 Count*	2019 CVAP*
Total	43,514	20,001
White	10.44%	23.97%
Black	1.24%	2.91%
Asian	8.03%	11.69%
Hispanic	77.50%	59.39%

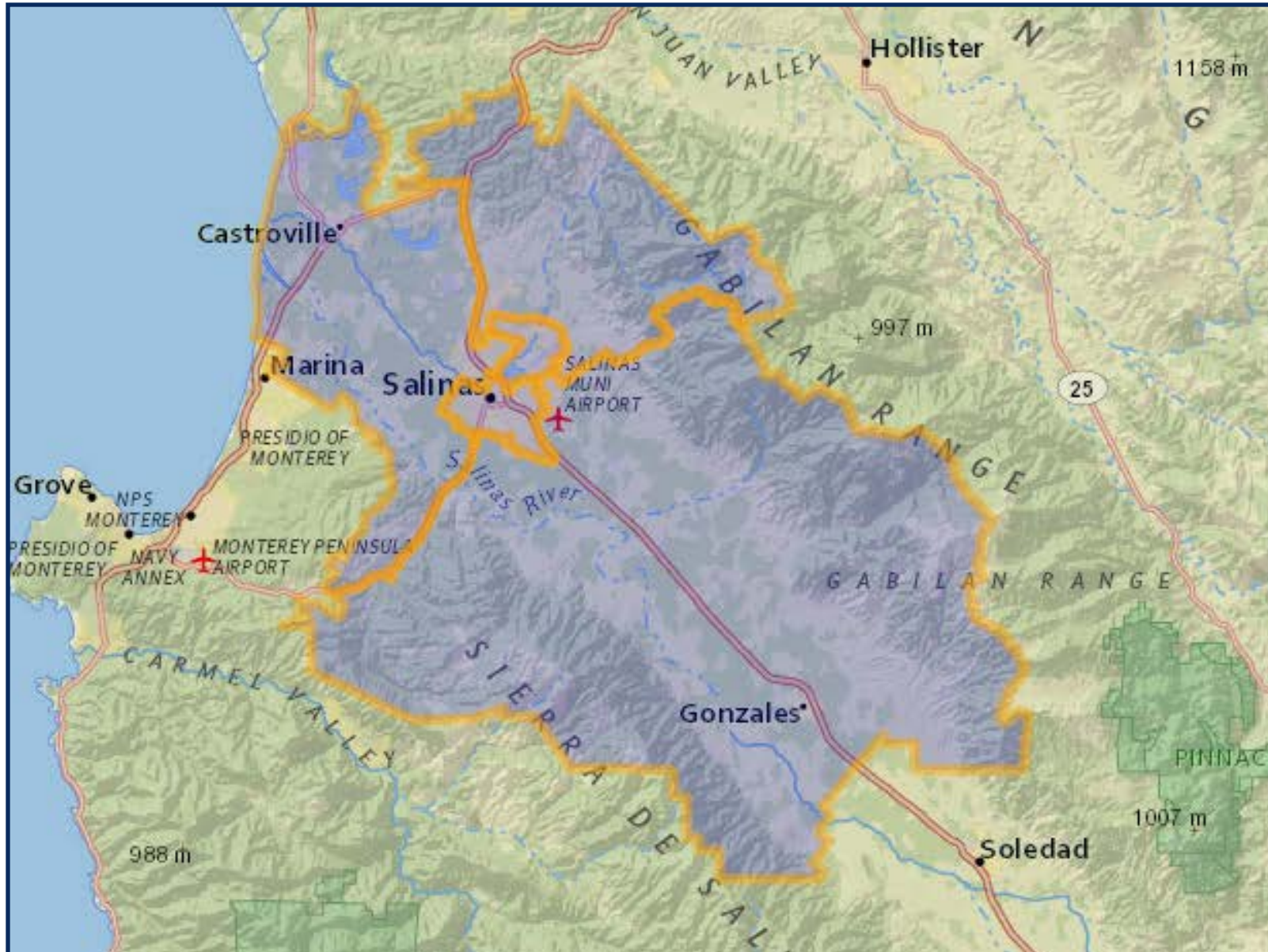
REDISTRICTING SVMHD SCENARIO 2

	ZONE 1	ZONE 2	ZONE 3	ZONE 4	ZONE 5
2020 Census Count*	43,276	43,984	44,880	43,481	44,423
Deviation #	-733	-25	871	-528	414
Deviation %	-1.7%	-0.1%	1.9%	-1.2%	0.9%
2010 Census Count	41,334	39,675	41,682	38,781	41,215
2019 CVAP*	16,869	20,820	19,608	20,321	19,090
2010 CVAP	16,218	19,022	19,230	19,637	17,571



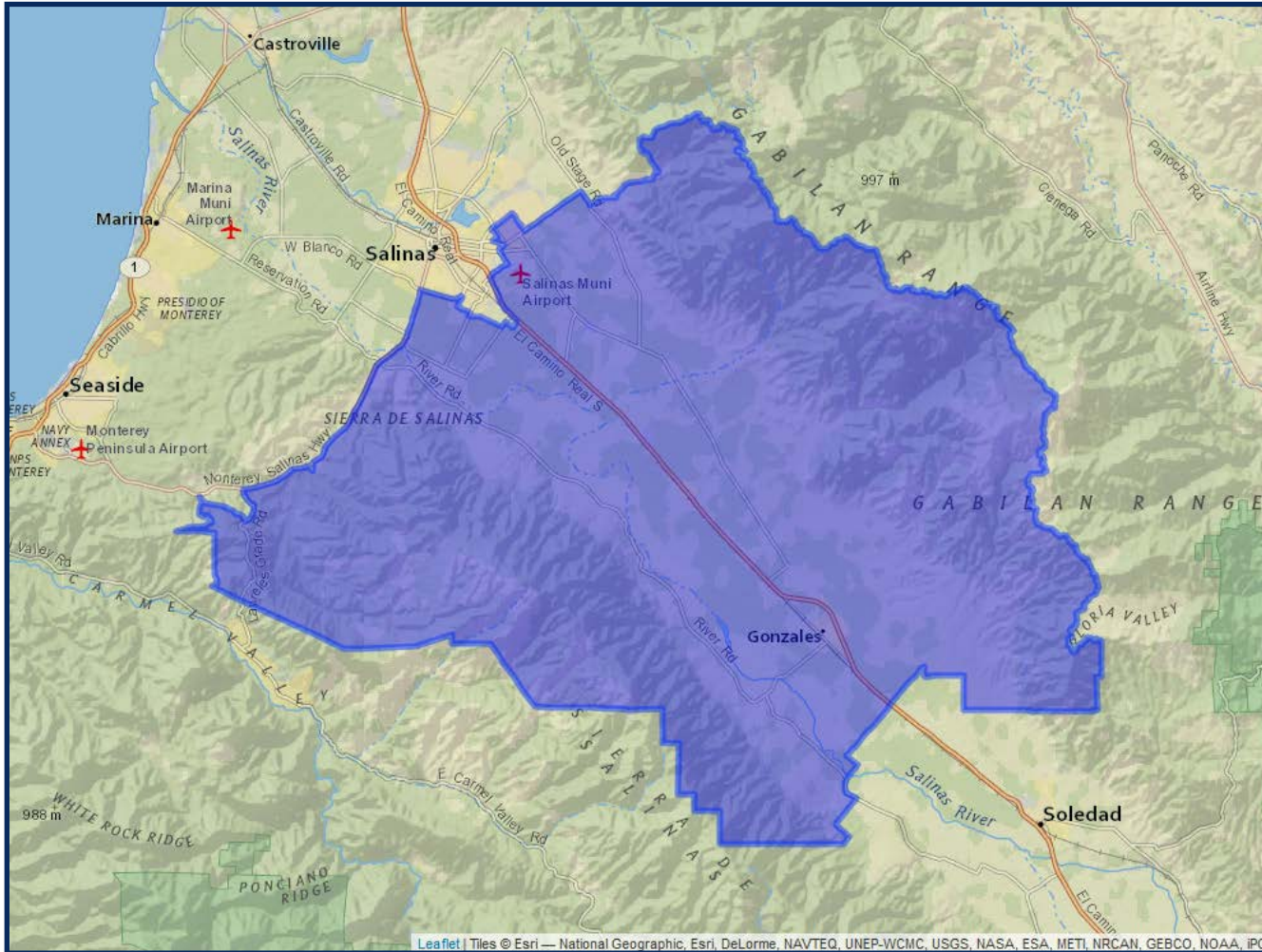
*Adjusted for prisoner reallocation

REDISTRICTING SVMHD SCENARIO 2



REDISTRICTING SVMHD SCENARIO 2

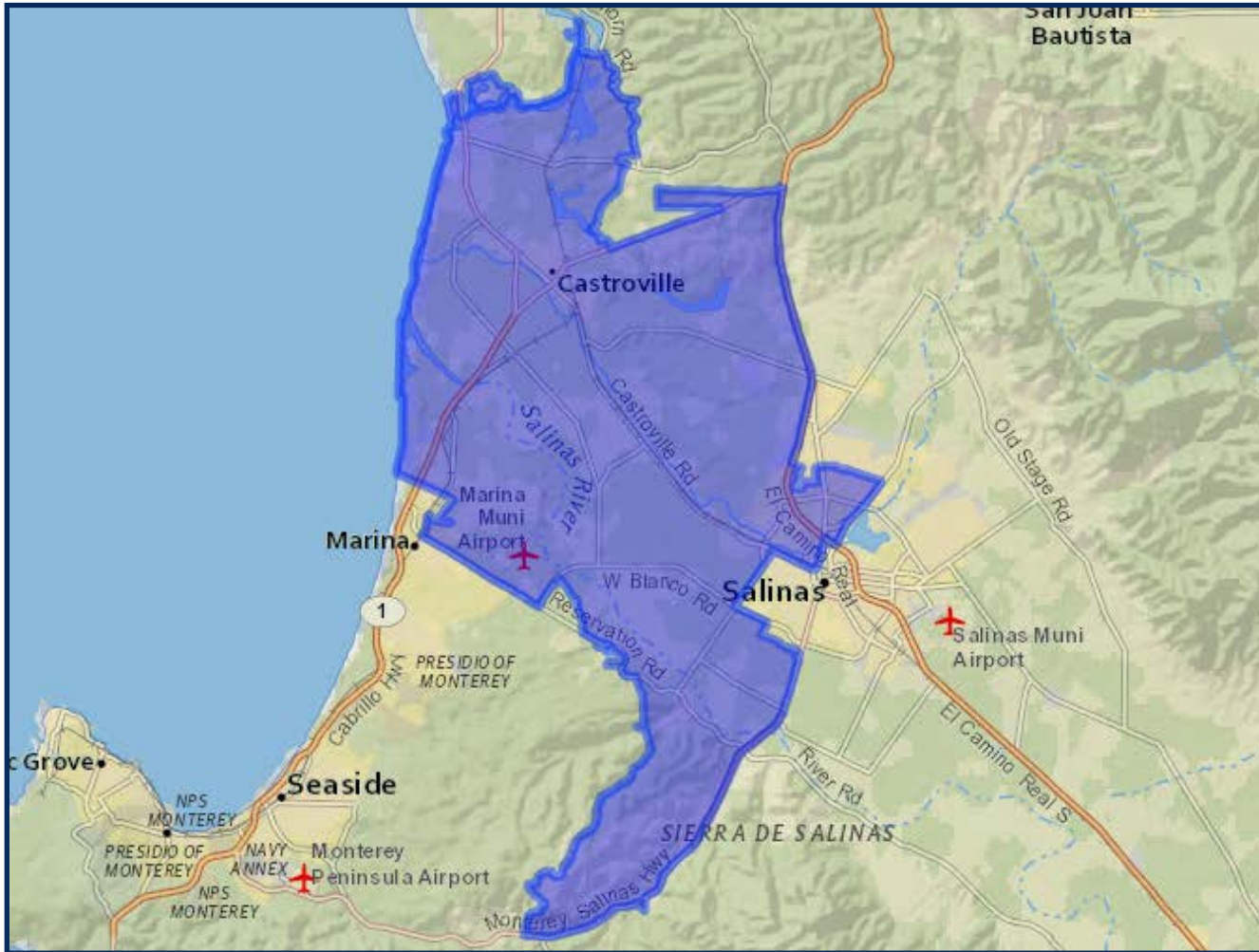
ZONE 1



	2020 Count*	2019 CVAP*
Total	43,276	16,869
White	19.75%	39.88%
Black	0.44%	0.36%
Asian	3.21%	3.18%
Hispanic	74.05%	54.84%

REDISTRICTING SVMHD SCENARIO 2

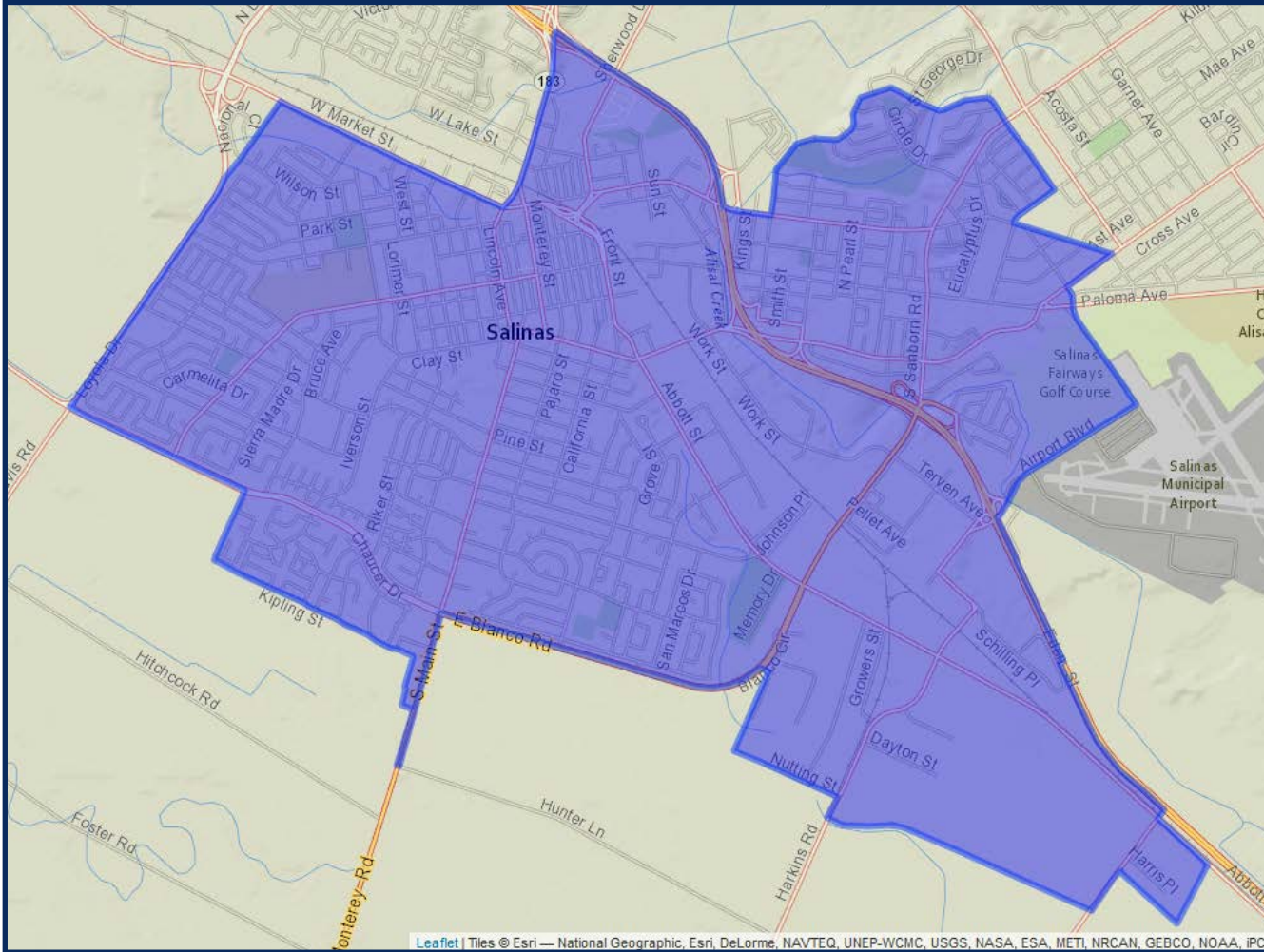
ZONE 2



	2020 Count*	2019 CVAP*
Total	43,984	20,820
White	17.15%	32.66%
Black	1.62%	3.29%
Asian	5.97%	7.21%
Hispanic	71.54%	54.02%

REDISTRICTING SVMHD SCENARIO 2

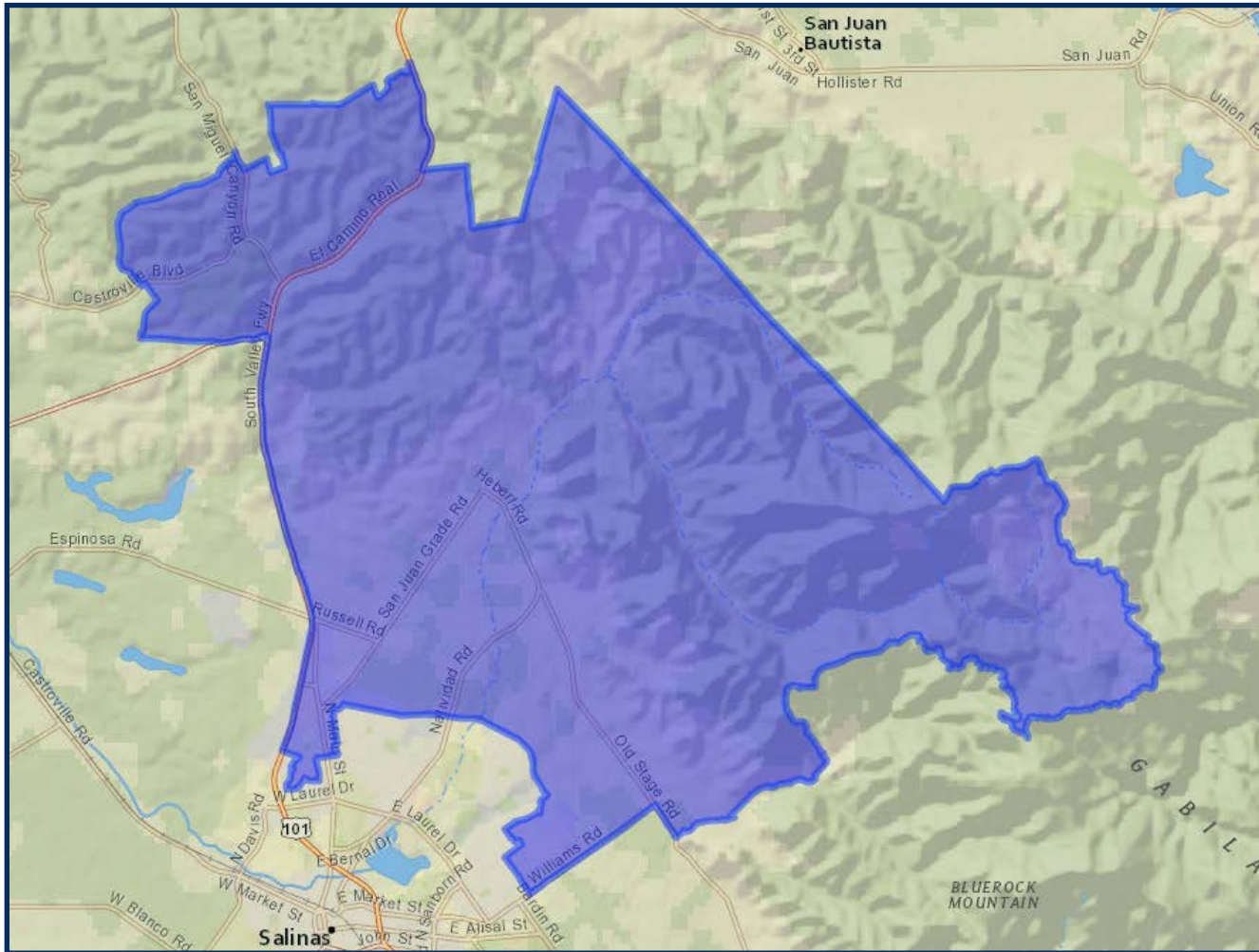
ZONE 3



	2020 Count*	2019 CVAP*
Total	44,880	19,608
White	19.55%	39.19%
Black	1.30%	1.75%
Asian	3.55%	5.46%
Hispanic	72.18%	51.01%

REDISTRICTING SVMHD SCENARIO 2

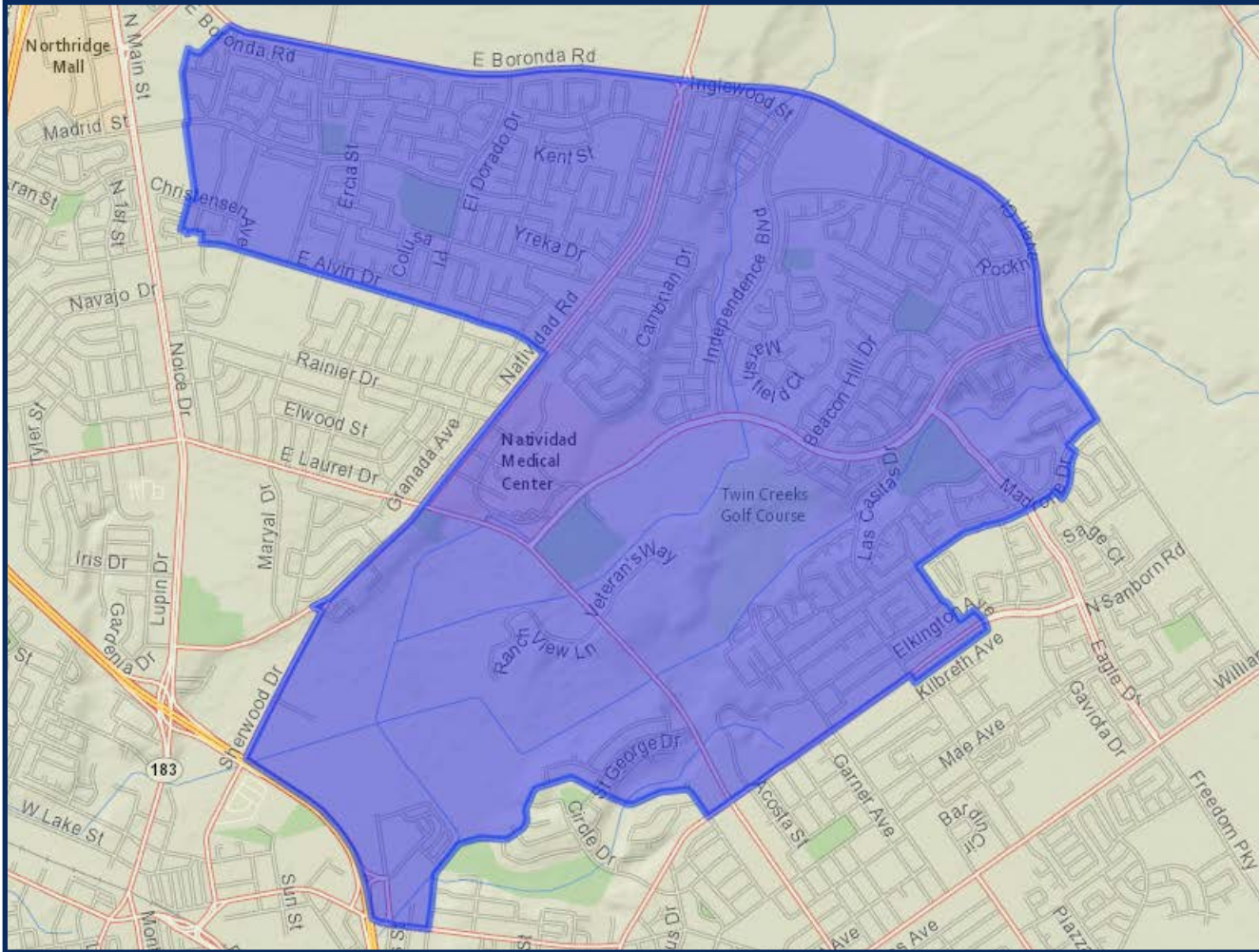
ZONE 4



	2020 Count*	2019 CVAP*
Total	43,481	20,321
White	17.74%	36.95%
Black	0.82%	2.05%
Asian	3.91%	5.60%
Hispanic	74.40%	51.16%

REDISTRICTING SVMHD SCENARIO 2

ZONE 5



	2020 Count*	2019 CVAP*
Total	44,423	19,090
White	8.62%	18.63%
Black	1.31%	3.07%
Asian	8.92%	12.23%
Hispanic	78.87%	63.47%

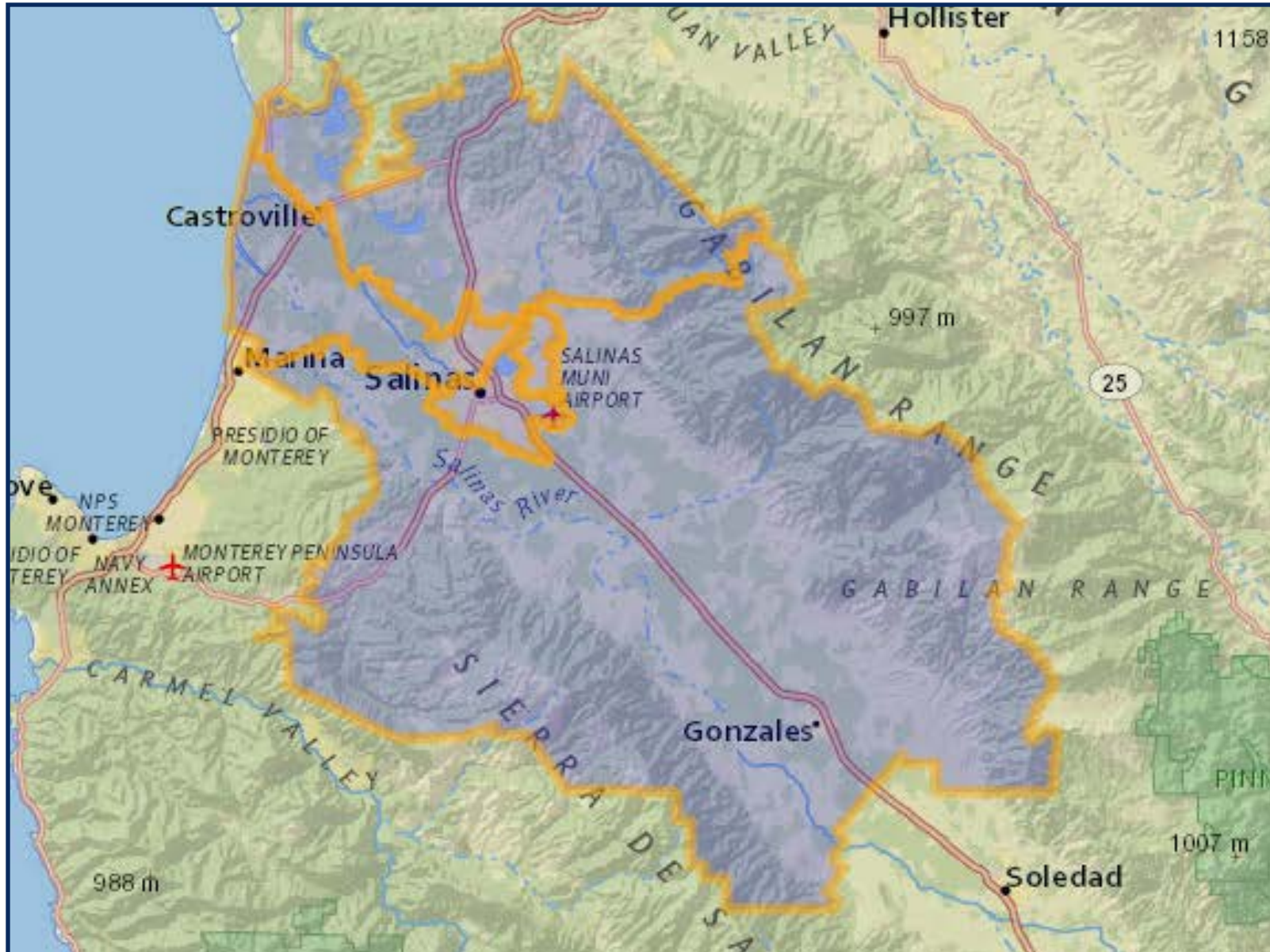
REDISTRICTING SVMHD SCENARIO 3

	ZONE 1	ZONE 2	ZONE 3	ZONE 4	ZONE 5
2020 Census Count*	44,217	44,575	43,390	43,608	44,254
Deviation #	208	566	-619	-401	245
Deviation %	0.5%	1.3%	-1.4%	-0.9%	0.6%
2010 Census Count	40,656	39,426	38,703	42,475	41,427
2019 CVAP*	20,854	22,510	20,441	12,935	19,968
2010 CVAP	20,022	21,579	18,375	12,491	19,211



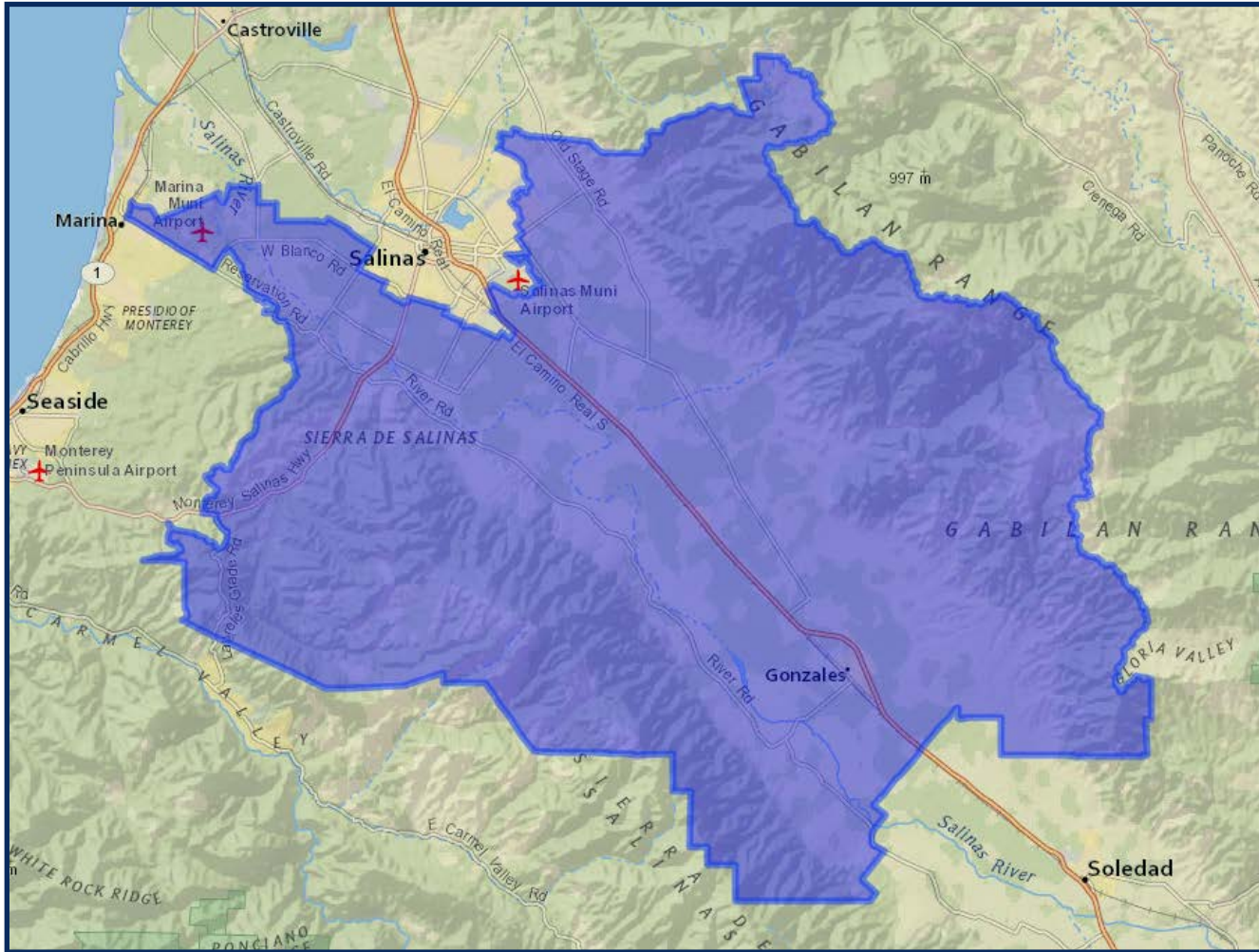
*Adjusted for prisoner reallocation

REDISTRICTING SVMHD SCENARIO 3



REDISTRICTING SVMHD SCENARIO 3

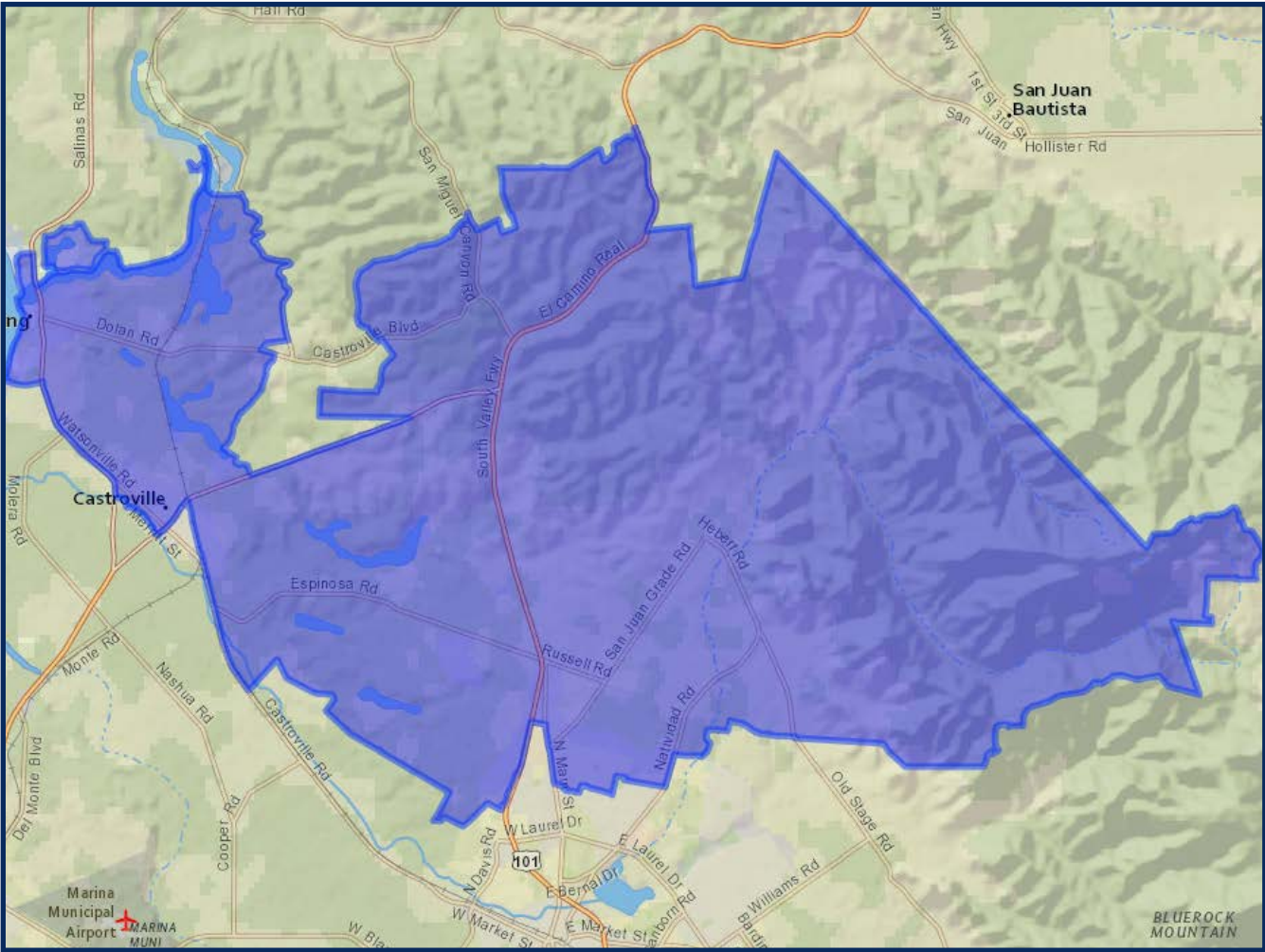
ZONE 1



	2020 Count*	2019 CVAP*
Total	44,217	20,854
White	25.57%	42.41%
Black	0.85%	1.24%
Asian	5.66%	5.38%
Hispanic	64.43%	48.26%

REDISTRICTING SVMHD SCENARIO 3

ZONE 2

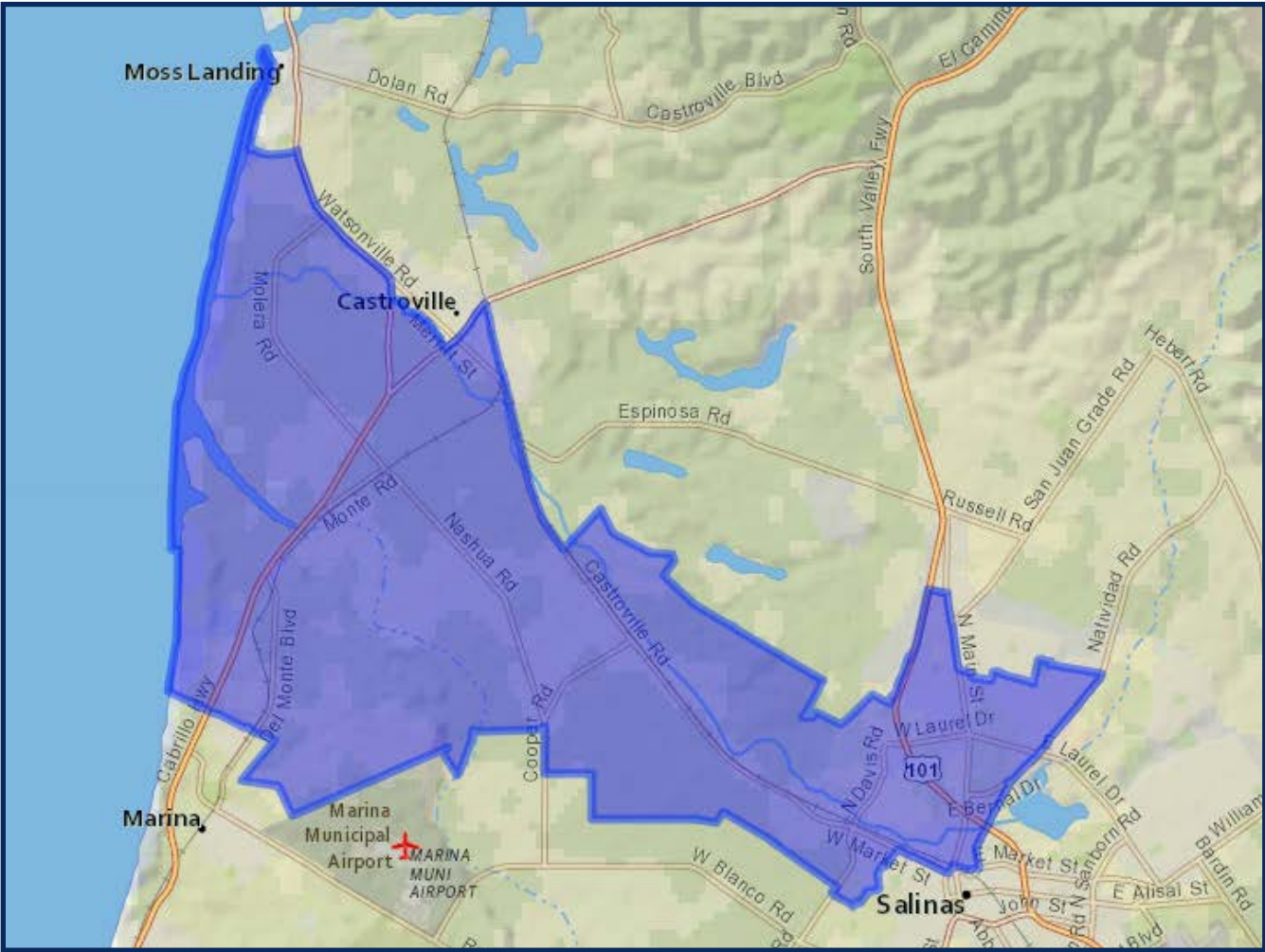


	2020 Count*	2019 CVAP*
Total	44,575	22,510
White	20.48%	39.85%
Black	0.91%	2.35%
Asian	6.12%	8.72%
Hispanic	69.05%	46.15%

*Adjusted for prisoner reallocation

REDISTRICTING SVMHD SCENARIO 3

ZONE 3

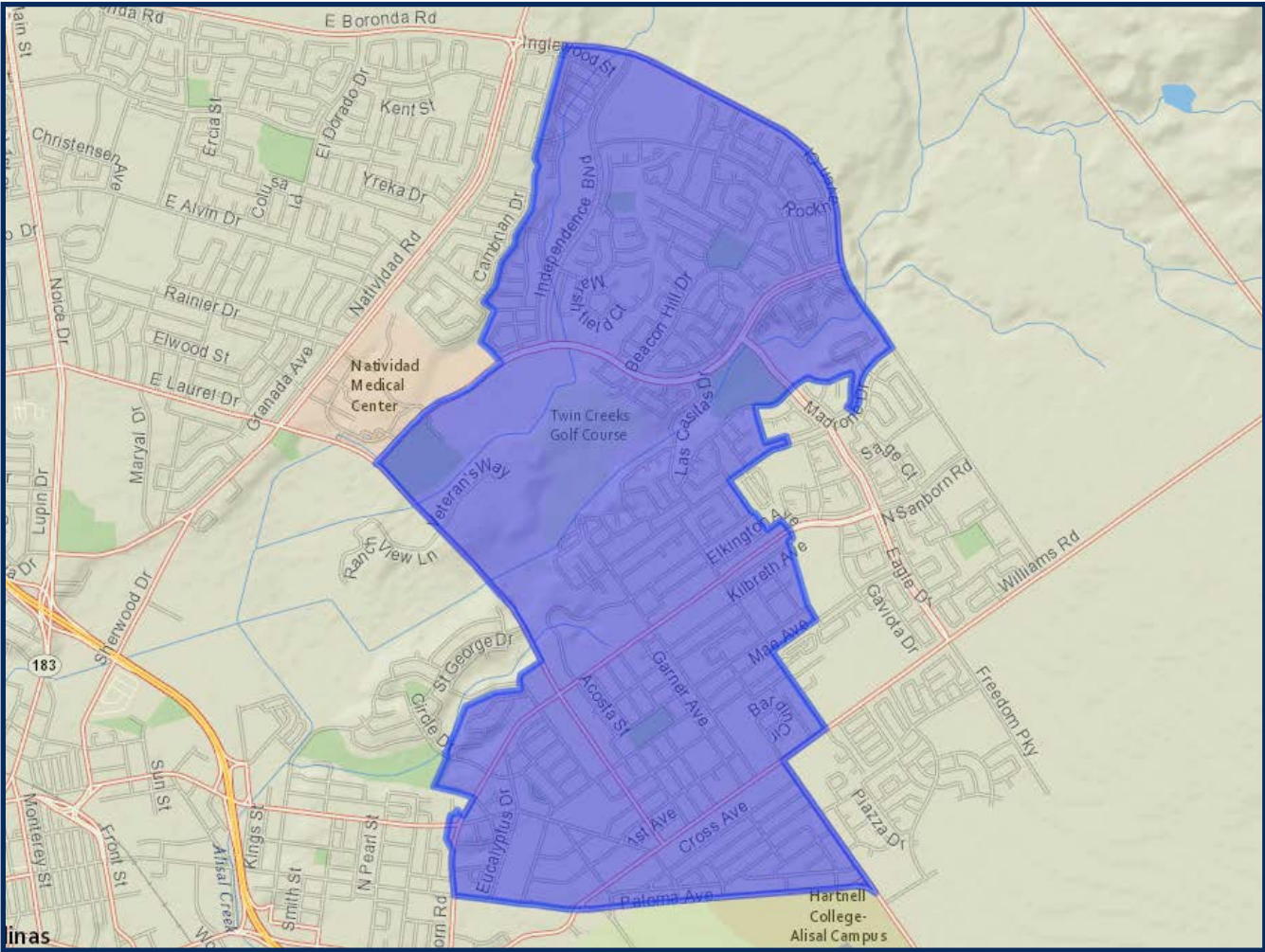


	2020 Count*	2019 CVAP*
Total	43,390	20,441
White	12.18%	24.65%
Black	1.66%	3.08%
Asian	6.46%	7.92%
Hispanic	76.42%	61.22%

*Adjusted for prisoner reallocation

REDISTRICTING SVMHD SCENARIO 3

ZONE 4



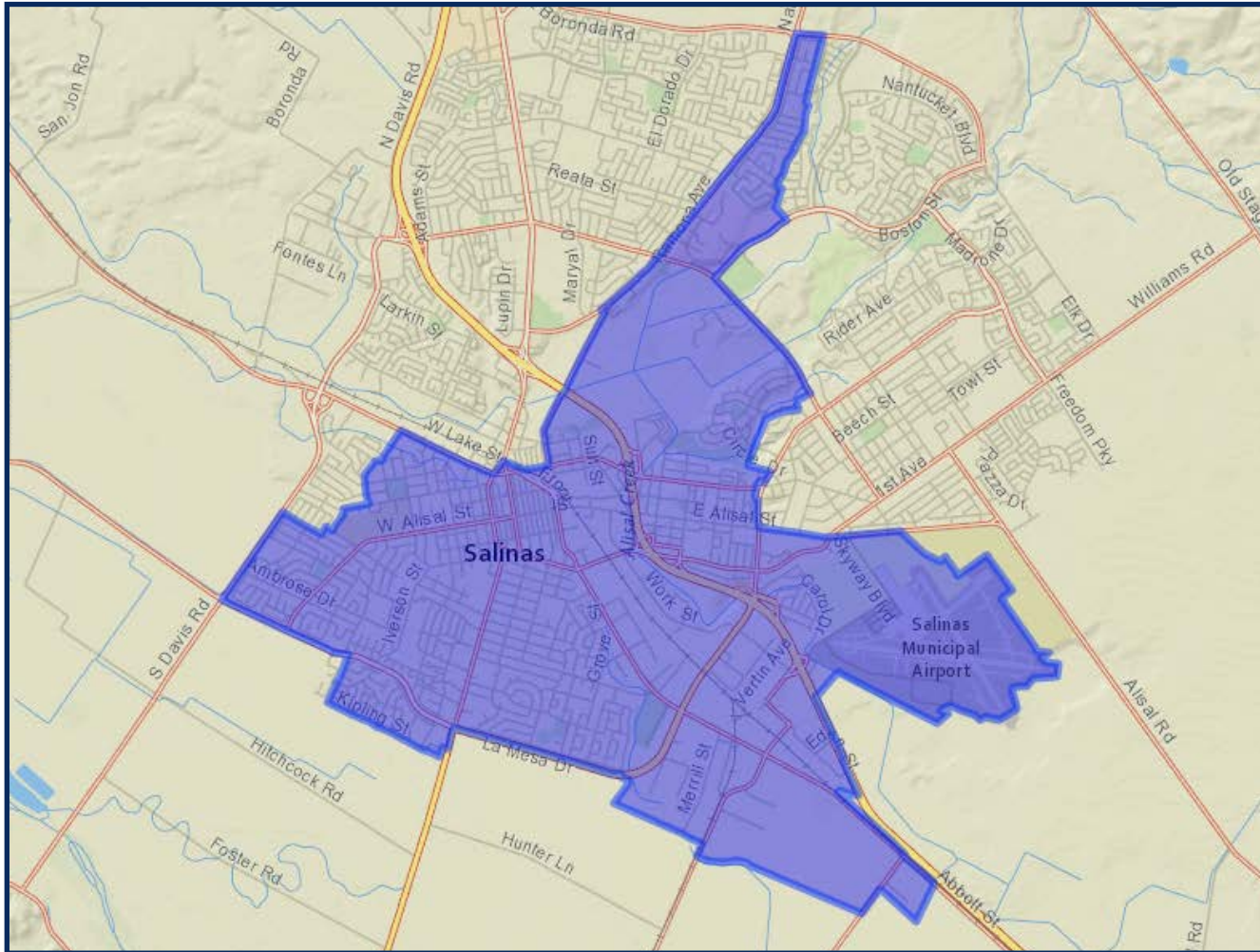
	2020 Count*	2019 CVAP*
Total	43,608	12,935
White	4.21%	13.03%
Black	0.69%	1.89%
Asian	3.64%	6.31%
Hispanic	89.83%	76.46%



*Adjusted for prisoner reallocation

REDISTRICTING SVMHD SCENARIO 3

ZONE 5



	2020 Count*	2019 CVAP*
Total	44,254	19,968
White	19.99%	38.76%
Black	1.41%	2.16%
Asian	3.72%	5.32%
Hispanic	71.60%	50.87%

REDISTRICTING SVMHD

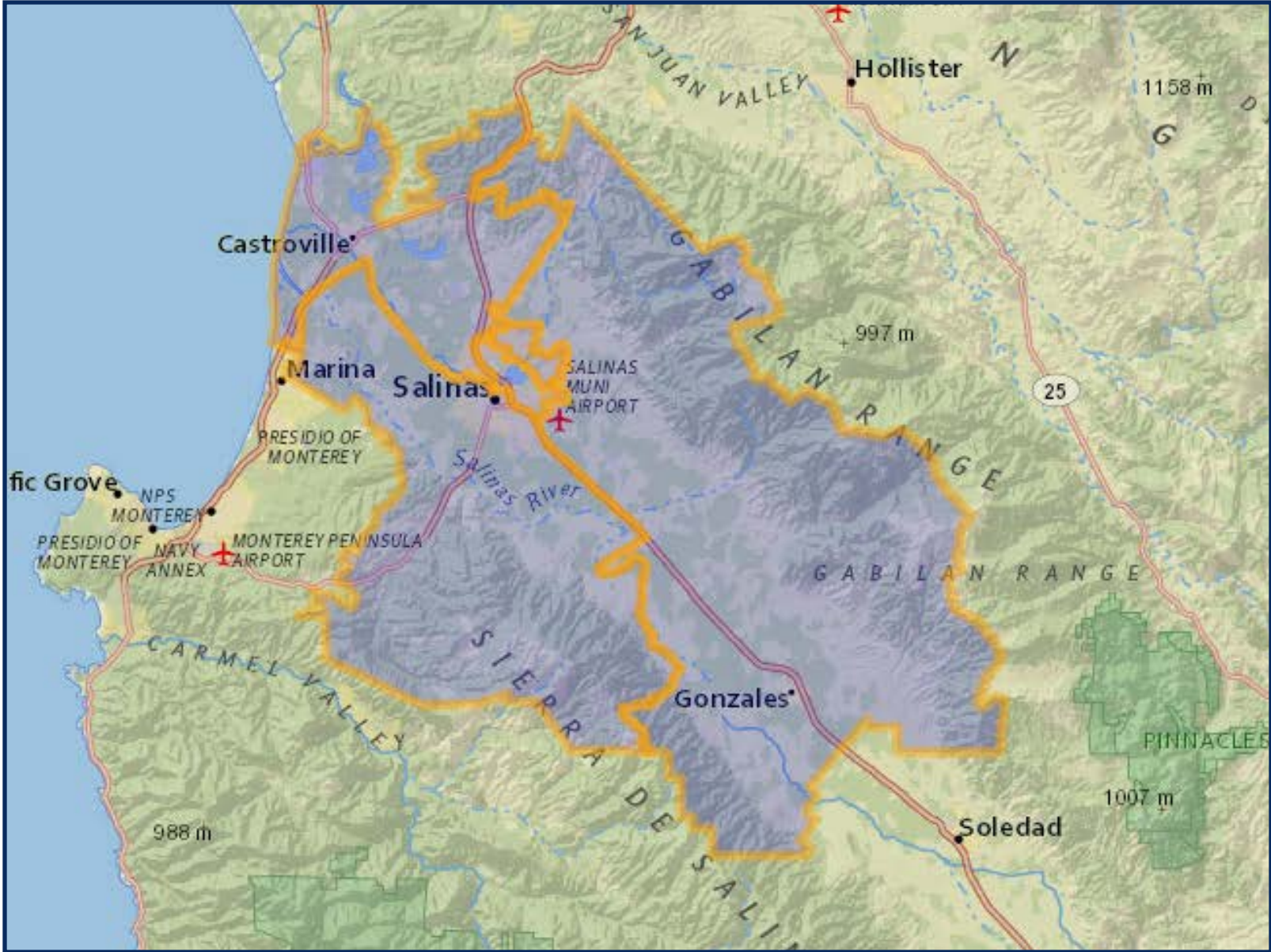
SCENARIO 4 - REVISED

	ZONE 1	ZONE 2	ZONE 3	ZONE 4	ZONE 5
2020 Census Count*	45,005	43,190	44,409	44,247	43,193
Deviation #	996	-819	400	238	-816
Deviation %	2.3%	-1.9%	0.9%	0.5%	-1.8%
2010 Census Count	39,777	40,487	42,728	39,121	40,574
2019 CVAP*	19,323	14,203	15,233	21,376	26,573
2010 CVAP	17,277	12,928	14,995	19,796	26,682



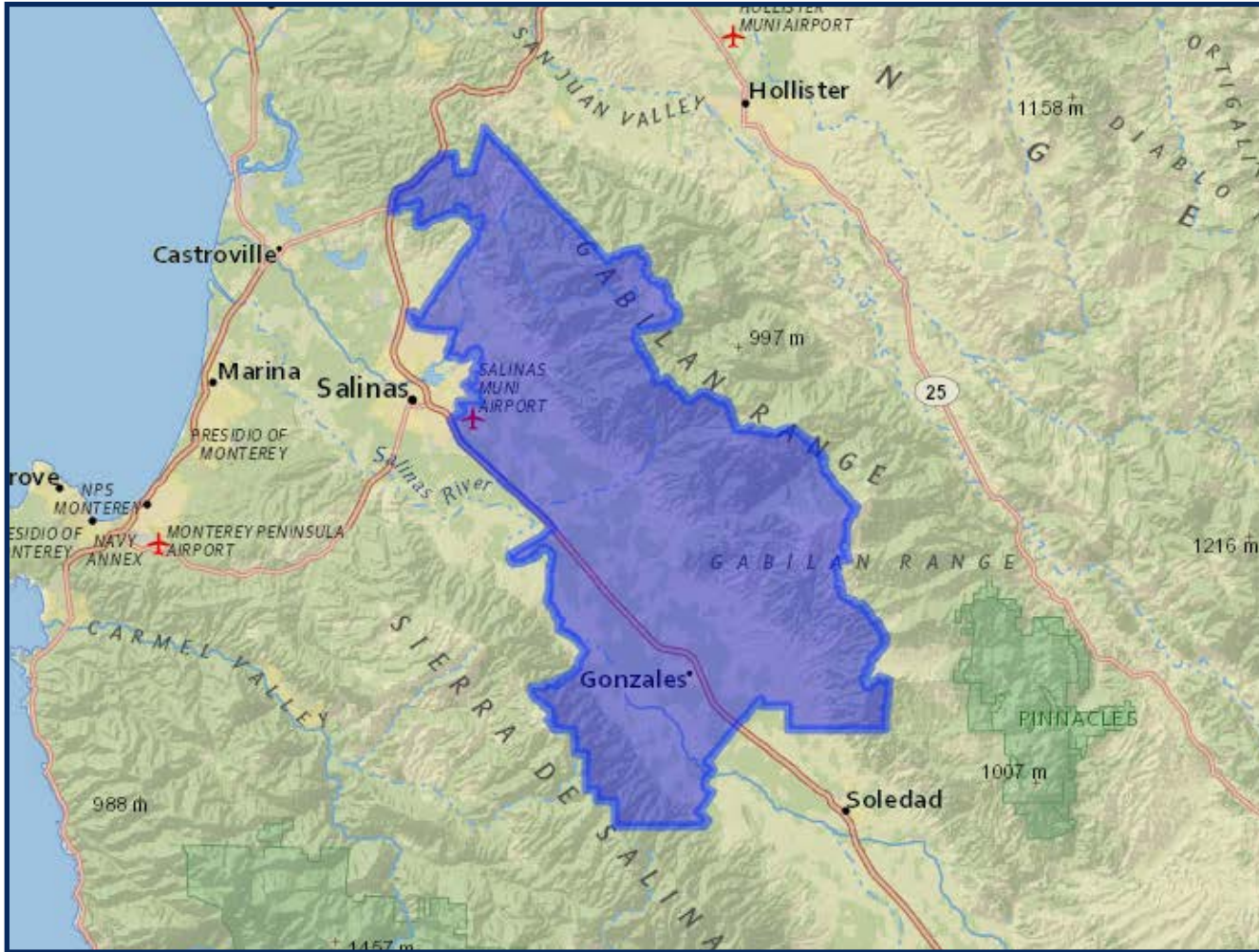
*Adjusted for prisoner reallocation

REDISTRICTING SVMHD
SCENARIO 4 - REVISED



REDISTRICTING SVMHD SCENARIO 4 - REVISED

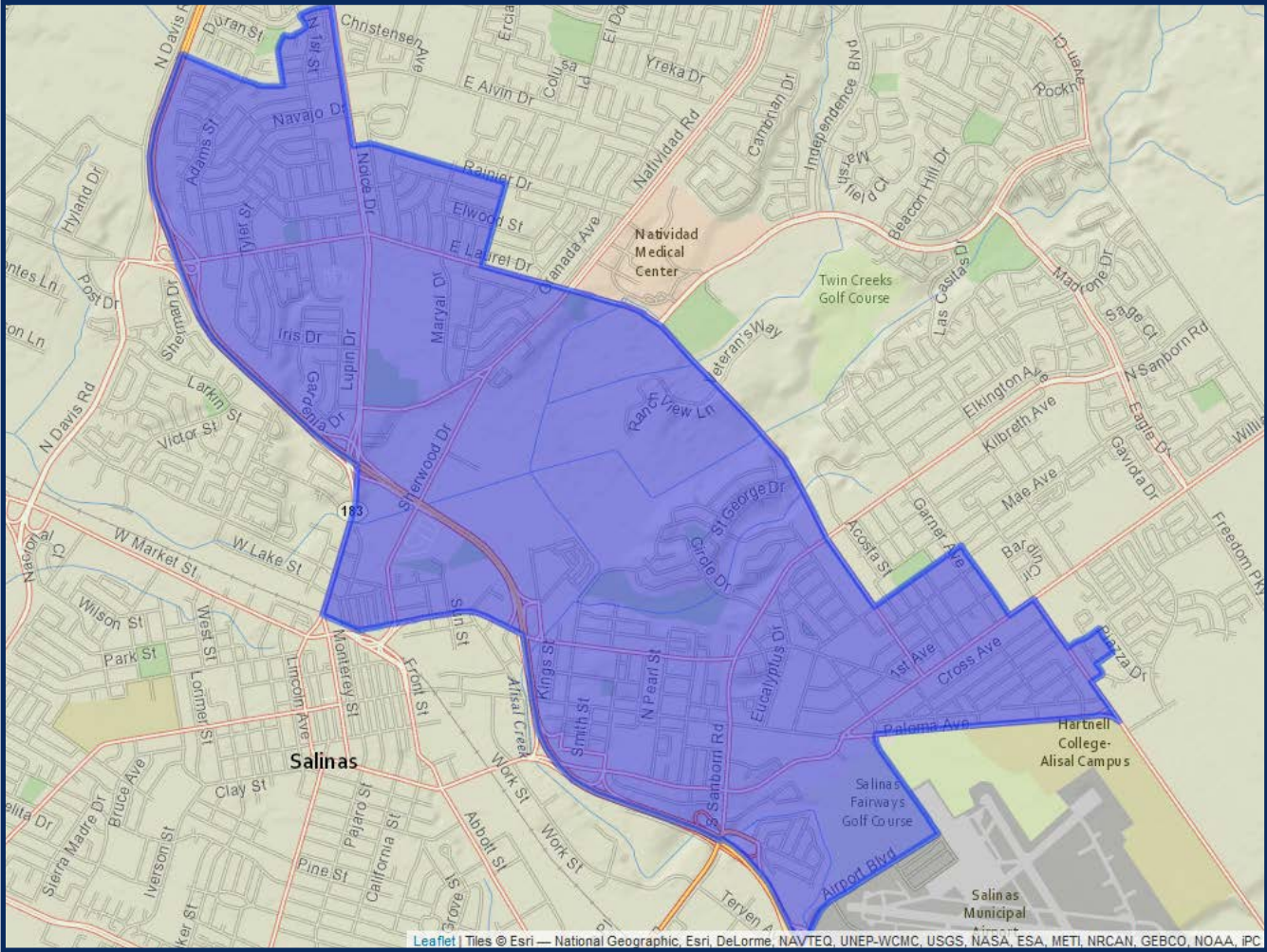
ZONE 1



	2020 Count*	2019 CVAP*
Total	45,005	19,323
White	10.88%	22.25%
Black	0.81%	1.76%
Asian	5.33%	5.15%
Hispanic	80.57%	67.33%

REDISTRICTING SVMHD SCENARIO 4 - REVISED

ZONE 2

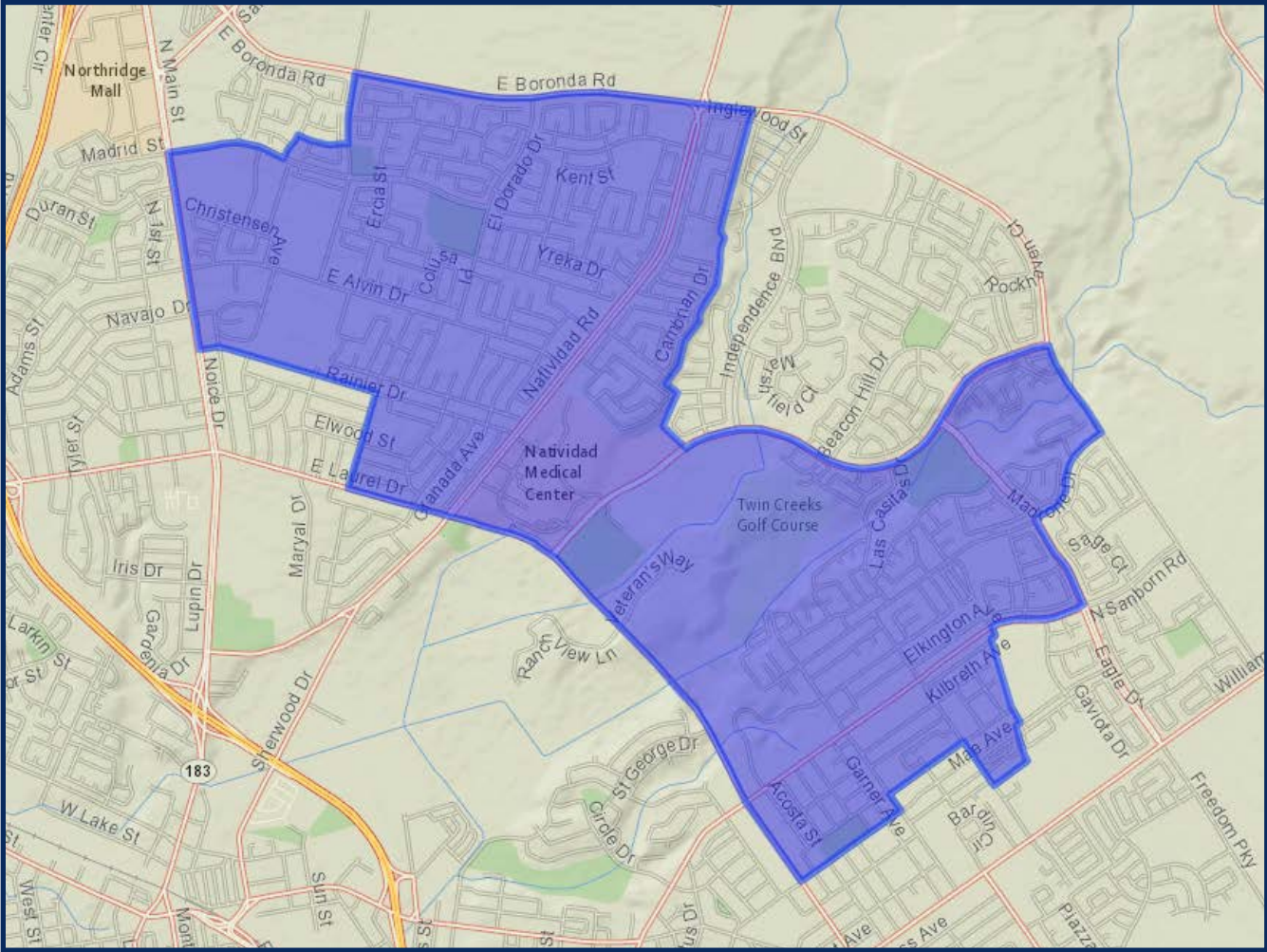


	2020 Count*	2019 CVAP*
Total	43,190	14,203
White	7.27%	21.54%
Black	0.87%	2.92%
Asian	2.62%	3.41%
Hispanic	87.22%	70.12%

*Adjusted for prisoner reallocation

REDISTRICTING SVMHD
SCENARIO 4 - REVISED

ZONE 3



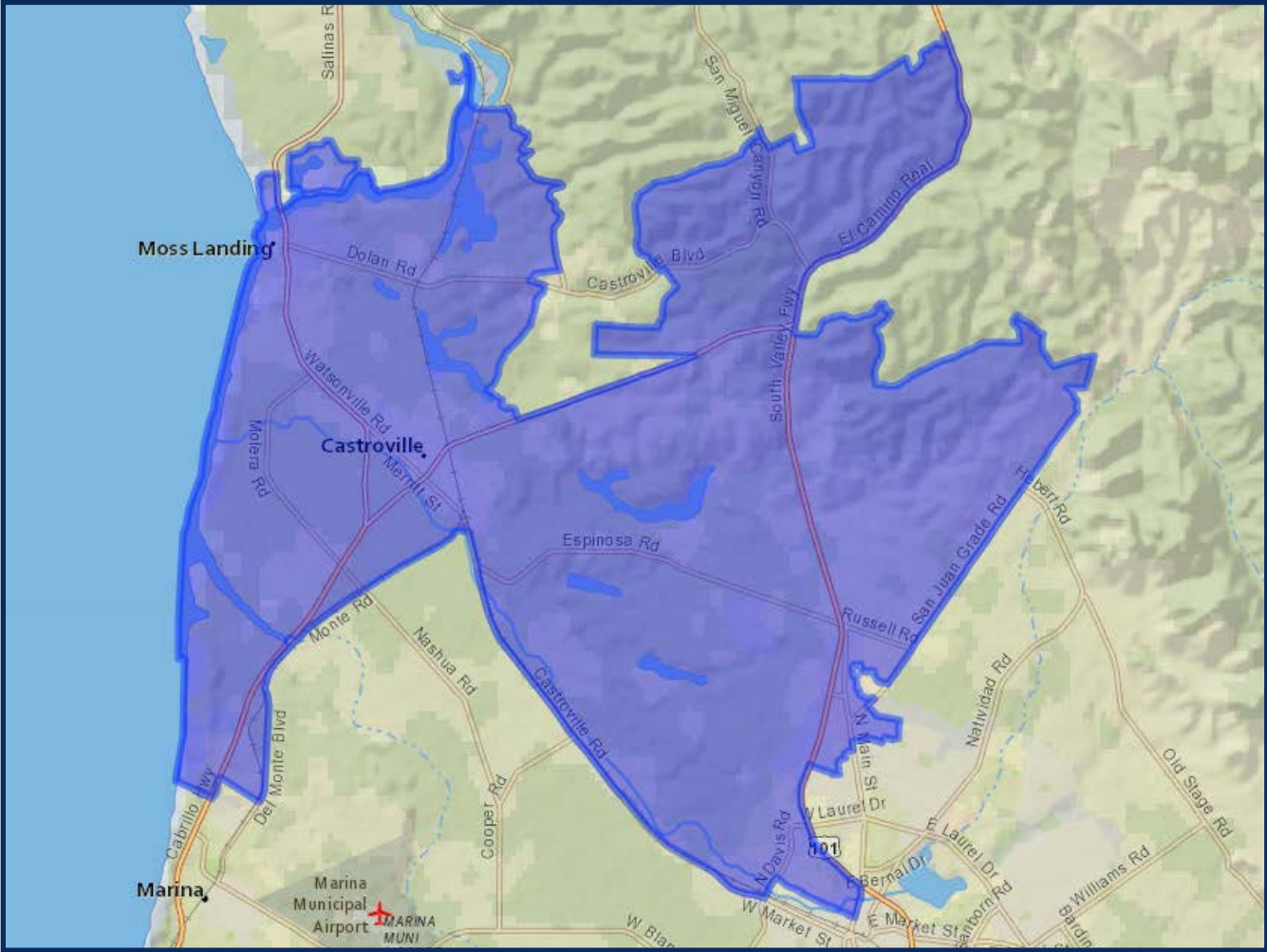
	2020 Count*	2019 CVAP*
Total	44,409	15,233
White	5.94%	15.23%
Black	0.99%	2.60%
Asian	6.53%	12.14%
Hispanic	84.78%	67.89%



*Adjusted for prisoner reallocation

REDISTRICTING SVMHD SCENARIO 4 - REVISED

ZONE 4



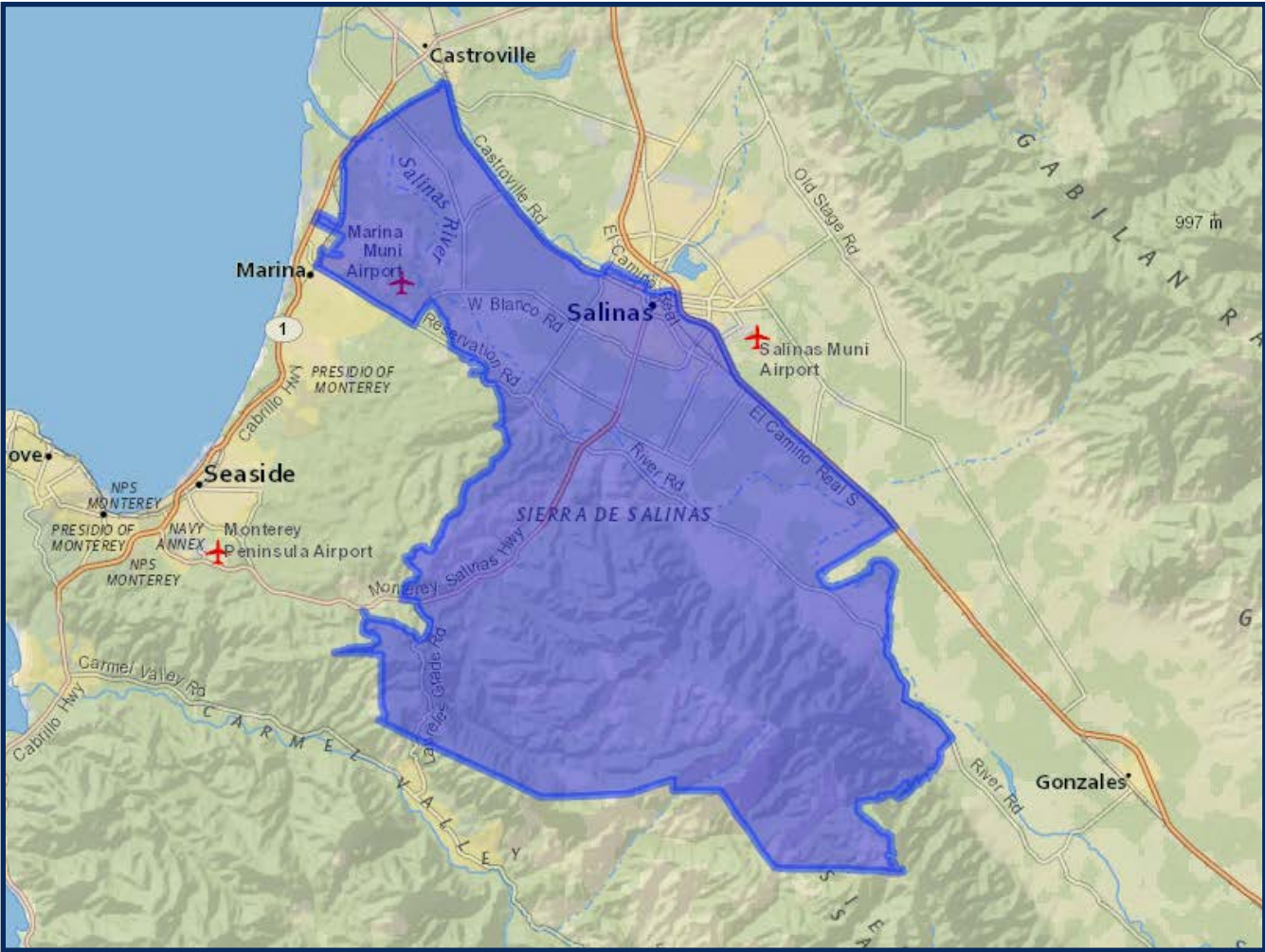
	2020 Count*	2019 CVAP*
Total	44,247	21,376
White	17.42%	34.95%
Black	1.16%	2.66%
Asian	4.48%	7.00%
Hispanic	73.64%	52.91%



*Adjusted for prisoner reallocation

REDISTRICTING SVMHD SCENARIO 4 - REVISED

ZONE 5



	2020 Count*	2019 CVAP*
Total	43,193	26,573
White	41.72%	56.94%
Black	1.68%	1.40%
Asian	6.60%	6.61%
Hispanic	44.28%	31.58%

*Adjusted for prisoner reallocation